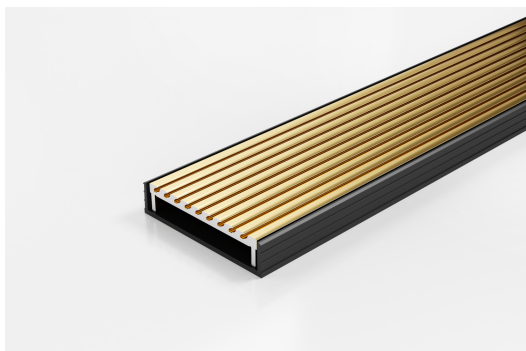


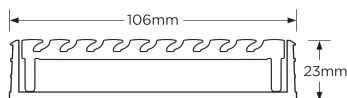


100AAGBL20-BG

Linear Drain



Channel Material uPVC



The 100AAGBL20-BG features a unique, all Aluminium Wave design grate finished in Brass-Gold and paired with a black uPVC channel.

Modular site finished linear drainage system features all Aluminium Wave grate combined with a uPVC channel.

SPECIFICATIONS + DIMENSIONS

Channel Width	106mm			
Channel Depth	23mm			
Length(s)	900mm	1000mm	1200mm	1500mm
	1800mm	2000mm	2200mm	2400mm
	2700mm	3000mm		
Outlet Size	DN40, DN50, DN80, DN100			

STORMTECH COLOUR FINISHES



Electroplate finishes subject to natural variation with time and local environment. Factors such as pools/surf beaches may require electropolishing. Contact us for suitability.

PRODUCT APPLICATIONS

Bathroom Drainage
Aged / Health Care Drainage
Balcony Drainage
Hospitality Drainage
Shower Drainage
Multi-Residential Drainage

Special Needs Drainage
Threshold Drainage
Suspended Slab Drainage
Wet Area Drainage

Copyright © Stormtech Pty Ltd. Patent 733361. Drawings not to scale, please use dimensions shown.
Downloaded 20/05/2024 (please check for updates)



Visit **stormtech.com.au**
for tools + inspiration.

Phone **1300 653 403**

Email **info@stormtech.com.au**