

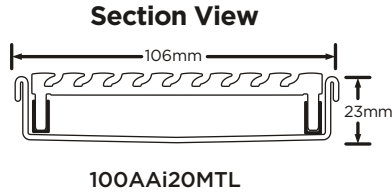


Order and Quote Form

Made-to-Length Linear Drainage › Multiple Outlet

Select Grate Style

Product Code 100AAi20MTL
Grate Style Wave Grate
Stormtech Range 100
Channel Material Stainless Steel
Grate Material Aluminium



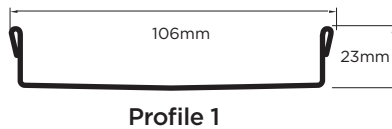
Finish / Code

- Aluminium 100AAi20MTL
- Matte Black 100AAi20MTL-Black
- Brass Gold 100AAi20MTL-BG

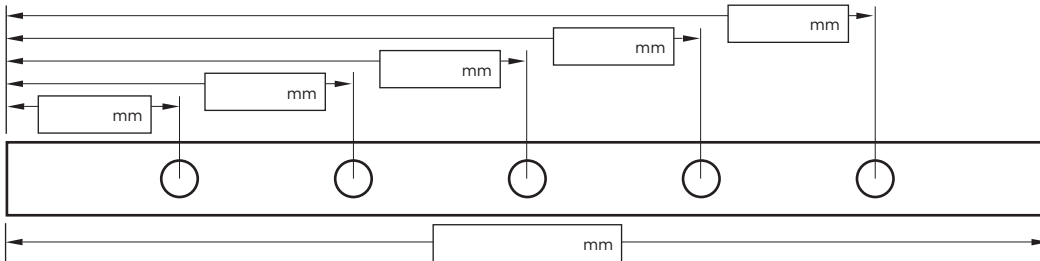
Please note: Only Aluminium grate is finished, channel is stainless steel

Tray Profile

100 Range



Specify Length, Outlet Positions/Size and Profile Required



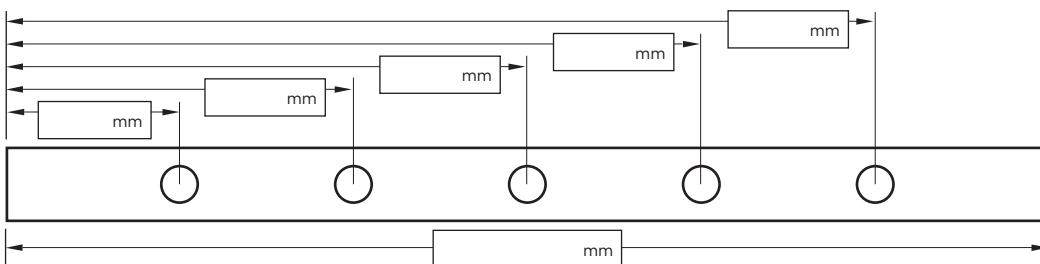
Drain 1

Profile Required

1

Outlet Size

- 38mm 44mm 51mm
- 63mm 76mm 89mm



Drain 2

Profile Required

1

Outlet Size

- 38mm 44mm 51mm
- 63mm 76mm 89mm

NOTE: See AS3500 standard & local regulator for specific outlet/drain requirements. Outlet Size must be smaller than selected Range. MND grate style not available with Profiles 2 or 4. Stainless Steel Grade is 316 unless specified. Made-to-Length (MTL) minimum charge of 800mm. Grates over 1500mm are supplied in multiple sections. Channels over 3000mm are supplied in multiple sections with joiner. Orders received after 11am are processed next working day. +/- 2mm tolerance on dimensions.

Full Name

Email Address

Company Name

Order Number

Stormtech Quote Number

Telephone

Signature